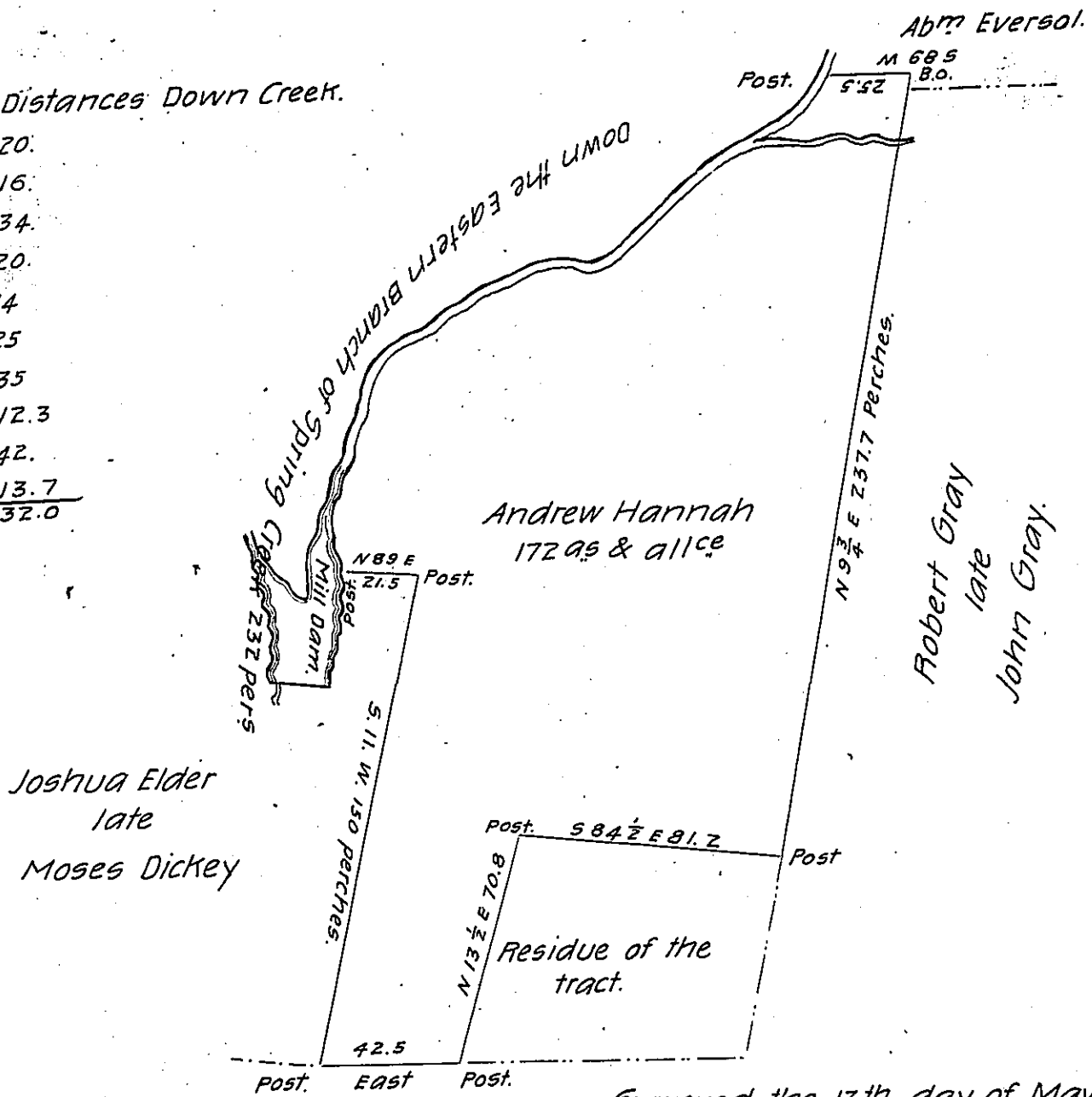


Courses & Distances Down Creek.

- S. 40. W. 20.
- S. 63. W. 16.
- S. 51 1/4 W. 34.
- S. 43. W. 20.
- N. 82 1/2 W. 14
- S. 61 1/4 W. 25
- S. 63 1/2 W. 35
- S. 29 W. 12.3
- S. 16 W. 42.
- S. 15 E. 13.7
- 232.0



Surveyed the 13th day of May 1813. for

William Espey.

Peter Parcake the above described tract of Land Situate in Swatara Township Dauphin County Containing One Hundred Seventy two Acres & allowance of six per cent part of 204<sup>95</sup> 84 perches (by the old established Boundaries) on Warrant of Andrew Hannah dated the 2nd April 1752.

To Richard T. Leech Esquire      Thomas Smith, D.S.

Surveyor General.

N.B. The above mentioned Return of Survey of sd Larger Tract, ought to have stated that it was made by virtue of two Warrants granted to Andrew Hannah, to wit the above mentioned Warrant, and one dated the 9th Nov. 1750, the last mentioned Warrant being Perfectly descriptive, and both together being perfectly descriptive of the land represented by Survey of Wm Galbraith said to contain 197<sup>95</sup> but now found to contain 204<sup>95</sup> 84 & allce by the Old Marked Lines.      T.S.

IN TESTIMONY that the above is a copy of the original remaining on file in the Department of Internal Affairs of Pennsylvania, made conformably to an Act of Assembly approved the 16th day of February, 1833, I have hereunto set my Hand and caused the Seal of said Department to be affixed at Harrisburg, this twenty first day of March 1905.

*Geo. B. Johnson*  
Secretary of Internal Affairs.